



## ***PGMS Family Overview for Hybrid Learning 2020-2021***

***(Updated March 4, 2021)***

**Introduction** - This is an overview of the Hybrid Learning plan for Pacific Grove Middle School. Every aspect of this plan follows current state and county guidelines regarding safety measures and physical distancing to keep all staff and students safe as we return to face-to-face instruction. The plan is flexible enough to allow us to shift into and out of a full distance learning program if we are ordered by county officials to do so. As the county guidelines change, our plan for reopening may be adjusted. We realize that this will not answer all of our community's questions, so if you have questions or comments, please contact Principal Sean Roach by email at [sroach@pgusd.org](mailto:sroach@pgusd.org).

### **Two Programs Offered - Families would choose one**

1. Full Distance Learning - Students who are medically compromised, have family members that are high risk, or who do not feel comfortable attending in-person classes at PGMS do not attend school but participate in distance learning every day.
2. Hybrid Learning program - Students attend school half-time with the other half accessed via distance learning.

### **Full Distance Learning (Available to all students)**

- Students continue to do all learning from home through Google Classroom and Google Meets.
- Students access daily live instruction via Google Meets sessions broadcast from the classroom.
- Daily live interaction with teachers and peers.
- All work is done online.
- Attendance and online engagement will be monitored.
- Students will be rostered to either the AM group or the PM group, and follow the schedule, below.

### **Hybrid Learning Program (Available to all students)**

**Weekly Attendance for Live Instruction** - Students will attend school on campus in AM/PM shifts, with half of the students coming to school in the mornings each day, and the other half coming to school in the afternoons. Mondays continue to be asynchronous work days, with continuation of the virtual Advisory classes. Office hours will be offered before and/or after school throughout each week, according to the teacher's set schedule of office hours.

## Hybrid Learning Program (Cont.)

**AM/PM** - In the AM/PM model, students come to school four half-days each week, either in the morning cohort (“A”) or in the afternoon cohort (“B”). The morning cohort (“A”) attends school in the mornings, and works asynchronously in the afternoons, and the afternoon cohort works asynchronously in the mornings, and attends school in the afternoons. All students attend three classes each day, and each class is 50 minutes long. In this model, there is no lunch period.

	Monday	Tuesday	Wednesday	Thursday	Friday
<b>AM/PM Model</b>	Teacher Planning, Advisory & DL	<b>AM Group (PM Asynchronous)</b> <b>PM Group (AM Asynchronous)</b>	<b>AM Group (PM Asynchronous)</b> <b>PM Group (AM Asynchronous)</b>	<b>AM Group (PM Asynchronous)</b> <b>PM Group (AM Asynchronous)</b>	<b>AM Group (PM Asynchronous)</b> <b>PM Group (AM Asynchronous)</b>

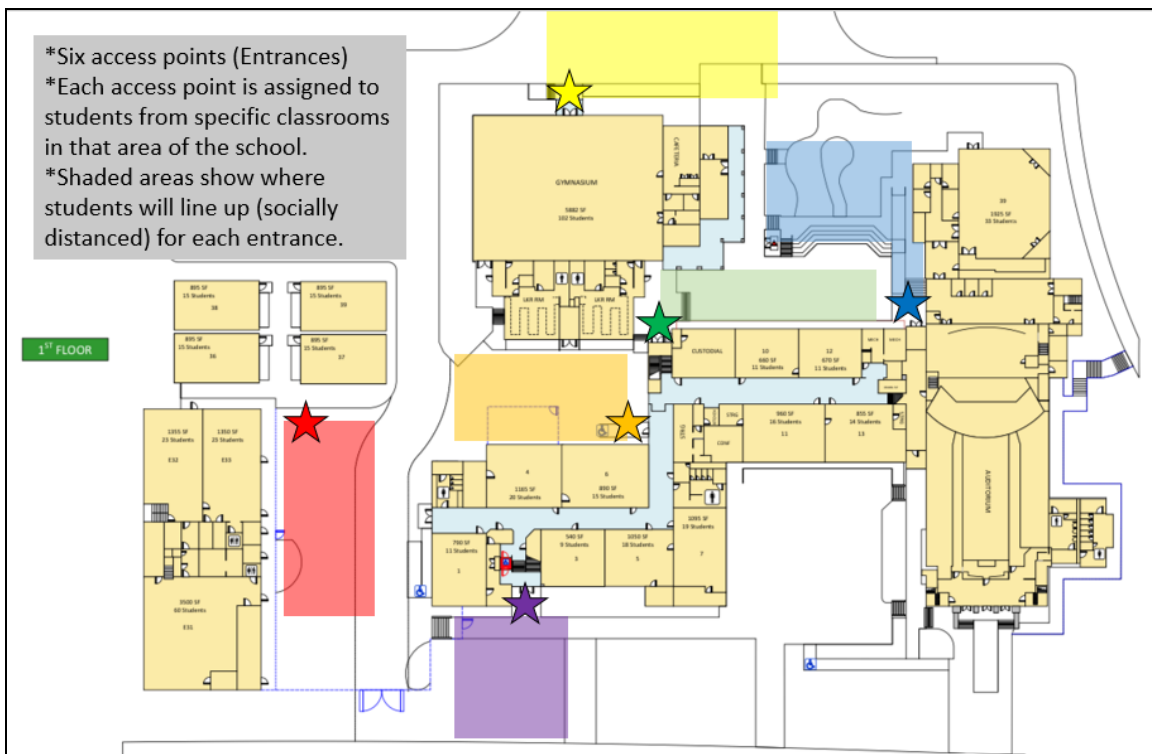
## PGMS Hybrid Learning Schedule

### AM/PM Split

	Monday	Tuesday	Wednesday	Thursday	Friday	
7:45- 8:25	Period 1*	7:35 - 8:15 Period 1 (Group 1)	Period 1 (Group 2)	Period 1 (Group 1)	Period 1 (Group 2)	
8:30- 9:10	Period 2	8:30 - 9:20 Period 2A	Period 3A	Period 2A	Period 3A	Synchronous Instruction Group A
9:20- 10:00	Period 3	9:20-09:35	Break (15)	Break (15)		Synchronous Instruction Group B
10:10- 10:45	Advisory	9:35- 10:25 Period 4A	Period 5A	Period 4A	Period 5A	Breaks
10:45- 11:00	Break	10:25 - 10:40	Break (15)	Break (15)		Advisory (All Students A/B together)
11:00- 11:40	Period 4	10:40 - 11:30 Period 6A	Period 7A	Period 6A	Period 7A	Asynchronous schedule (optional)
11:50- 12:30	Period 5 Period 8 Jazz Combo 11:00-12:20 (Virtual)	11:30-12:30	Cohort A Dismissal Grab & Go Lunch Disinfect Classrooms Cohort B Arrival	Cohort A Dismissal Grab & Go Lunch Disinfect Classrooms Cohort B Arrival		
12:30- 1:15	Lunch	12:30-1:20	Period 2B	Period 3B	Period 2B	Period 3B
1:15- 1:55	Period 6	1:20-1:35	Break (15)	Break (15)	Break (15)	
2:05- 2:45	Period 7 Choir (Virtual) 1:15-2:35	1:35-2:25	Period 4B	Period 5B	Period 4B	Period 5B
		2:25-2:40	Break (15)	Break (15)	Break (15)	
		2:40-3:30	Period 6B	Period 7B	Period 6B	Period 7B

## Student Drop Off & Pick Up

- Students may arrive on campus up to 15 minutes prior to the start of their day.
- Students will be assigned a campus entrance in close proximity to the location of their first class of the day.
- Students must head directly to their assigned point of entry, and wait in the designated area to be let in the building.
- Student temperatures will be taken, but not recorded, at their assigned point of entry. Parents will be contacted for students with a fever of greater than 100.4 degrees.
- Students will be monitored as they move into and out of the building in order to ensure that safety protocols (social distancing, mask wearing, etc.) are being followed.
- Parents will not be allowed to accompany students on to campus before, during, or after school.



## Transportation

- Detailed information will be available once physical distancing requirements on buses are made clear and accurate capacity can be determined.

## Personal Protective Equipment

- Students - all students would be required to wear a mask according to county guidelines at this time. This will be adjusted if and when guidance changes. Students who do not have a mask will be provided one by the school. Students must wear masks at all times while at school, unless eating or drinking.
- Staff - All staff will be required to wear a mask and have the option of wearing a plastic face shield as well.

## Physical Distancing

- In Class - Students will be seated six feet apart while in classrooms.
- In Hallways - Staff will supervise hallways at all passing periods to remind students to maintain six feet of physical distance.
- Outside - during PE and any time they line up outside, students will maintain six feet of social distance.

## Lunch

- School lunches will be provided to ALL students at no cost.
  - All students will be provided a “grab-n-go” lunch as they *leave* campus.
    - AM students eat their lunch the same day.
    - PM students eat their lunch the following day.
  - There will be no a la carte items available.

## Restrooms

- Students will use common restrooms with particular stalls assigned to each grade level.
- Students will be allowed in restrooms two at a time during passing periods
- Students may access restrooms during class periods, one at a time